

MELROSE P.U.D. VERONA LAKES - TRACT "C-1"

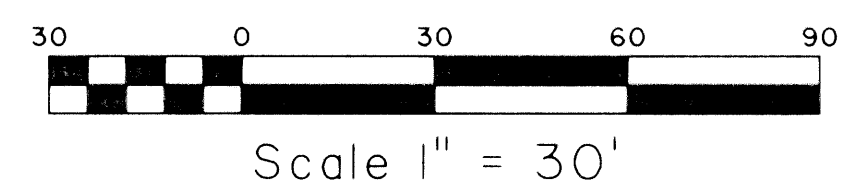
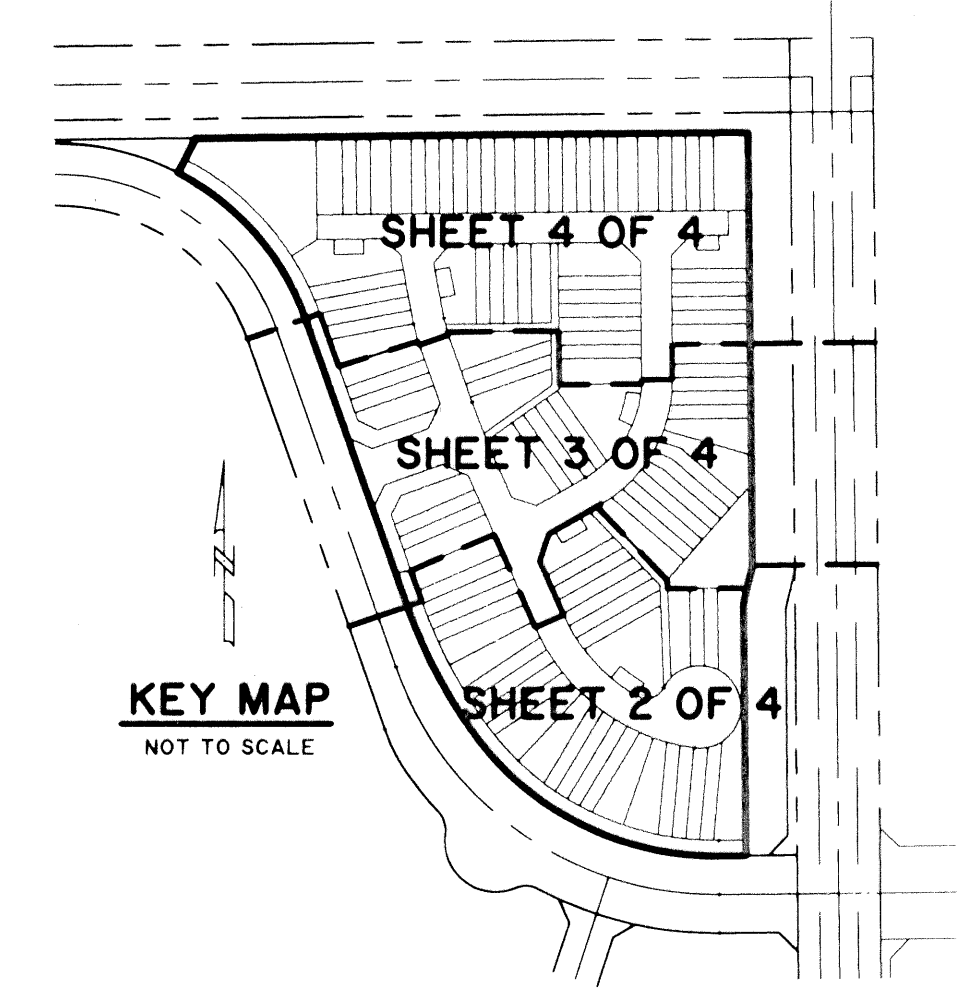
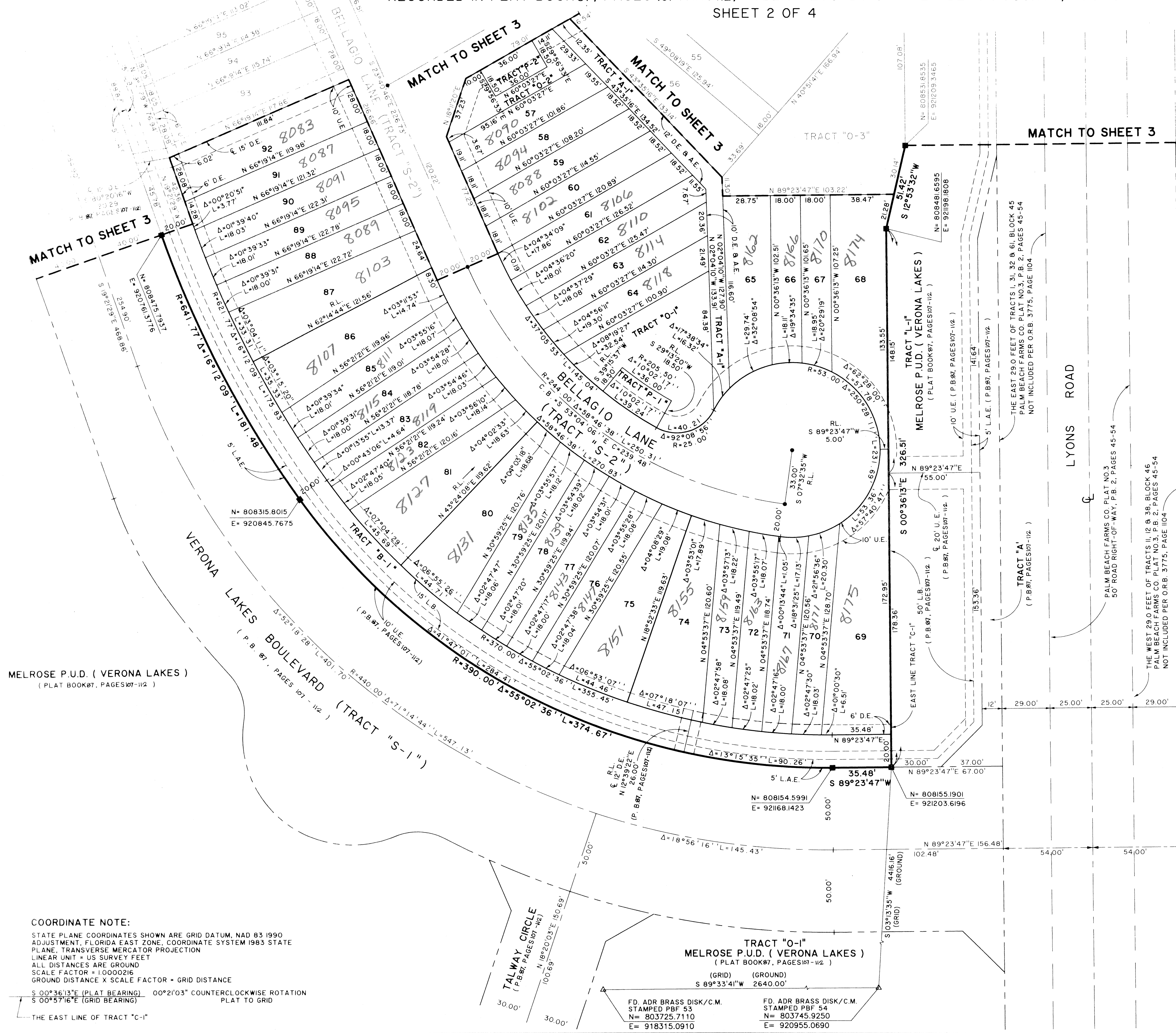
0255-014

181

A PORTION OF A PLANNED UNIT DEVELOPMENT
 LYING IN SECTION 18, TOWNSHIP 45 SOUTH, RANGE 42 EAST,
 BEING THE REPLAT OF TRACT "C-1" AND TRACT "L-4", MELROSE P.U.D. (VERONA LAKES), AS
 RECORDED IN PLAT BOOK 87, PAGES 107 THRU 112, PUBLIC RECORDS OF PALM BEACH COUNTY, FLORIDA.

SHEET 2 OF 4

STATE OF FLORIDA SS
 COUNTY OF PALM BEACH
 THIS PLAT WAS FILED FOR RECORD AT _____
 M. THIS _____ DAY OF _____ 20____
 AND DULY RECORDED IN PLAT BOOK NO. _____
 ON PAGE _____
 DOROTHY H. WILKEN,
 CLERK OF THE CIRCUIT COURT
 BY _____ D.C.



MELROSE P.U.D. (VERONA LAKES)
 (PLAT BOOK 87, PAGES 107 - 112)

VENETIAN ISLES BOULEVARD
 (PLAT BOOK 85, PAGES 9 - 13)

MELROSE P.U.D. (VENETIAN ISLES)
 (PLAT BOOK 85, PAGES 9 - 13)

MATCH TO SHEET 3

MATCH TO SHEET 3

MATCH TO SHEET 3

MATCH TO SHEET 3

SUBDIVISION
 Verona Lakes C-1
 BOOK 87
 FLOOD ZONE
 FLOOD MAP # 116A
 CHAD # 419
 ZONING PUD
 SS: B2-40
 ZIP CODE 33467
 TAZ 1007
 PUD NAME Melrose PUD

COORDINATE NOTE:
 STATE PLANE COORDINATES SHOWN ARE GRID DATUM, NAD 83 1990
 ADJUSTMENT, FLORIDA EAST ZONE, COORDINATE SYSTEM 1983 STATE
 PLANE, TRANSVERSE MERCATOR PROJECTION
 LINEAR UNIT = US SURVEY FEET
 ALL DISTANCES ARE GROUND
 SCALE FACTOR = 1.0000216
 GROUND DISTANCE X SCALE FACTOR = GRID DISTANCE
 S 00°36'13"E (PLAT BEARING) 00°21'03" COUNTERCLOCKWISE ROTATION
 S 00°57'16"E (GRID BEARING) PLAT TO GRID
 THE EAST LINE OF TRACT "C-1"

TRACT "O-1"
 MELROSE P.U.D. (VERONA LAKES)
 (PLAT BOOK 87, PAGES 107 - 112)
 (GRID) (GROUND)
 S 89°33'41"W 264.00'
 FD. ADR BRASS DISK/C.M.
 STAMPED PBF 53
 N= 803725.7110
 E= 918315.0910
 FD. ADR BRASS DISK/C.M.
 STAMPED PBF 54
 N= 803745.9250
 E= 920955.0690

Landmark Surveying & Mapping Inc.
 1850 Forest Hill Boulevard
 Ph. (561) 433-5405 Suite 100 W.P.B. Florida
 LB # 4396

MELROSE P.U.D. VERONA LAKES -
 TRACT "C-1"